

Technical drawing of a roof structure showing a cross-section. The drawing includes labels for different parts of the roof: E1.55.10, E1.52.75, E1.48.69, and E1.52.80. A section line K-J is indicated, with K at the bottom and J at the top. The drawing shows the profile of the roof and the internal structure, including a vertical support or wall on the right side.

Note: Place K-bars at junction of wings with backwall, 6" from back form and spaced at 16" centers vertically.

PLAN ABUT.#1.

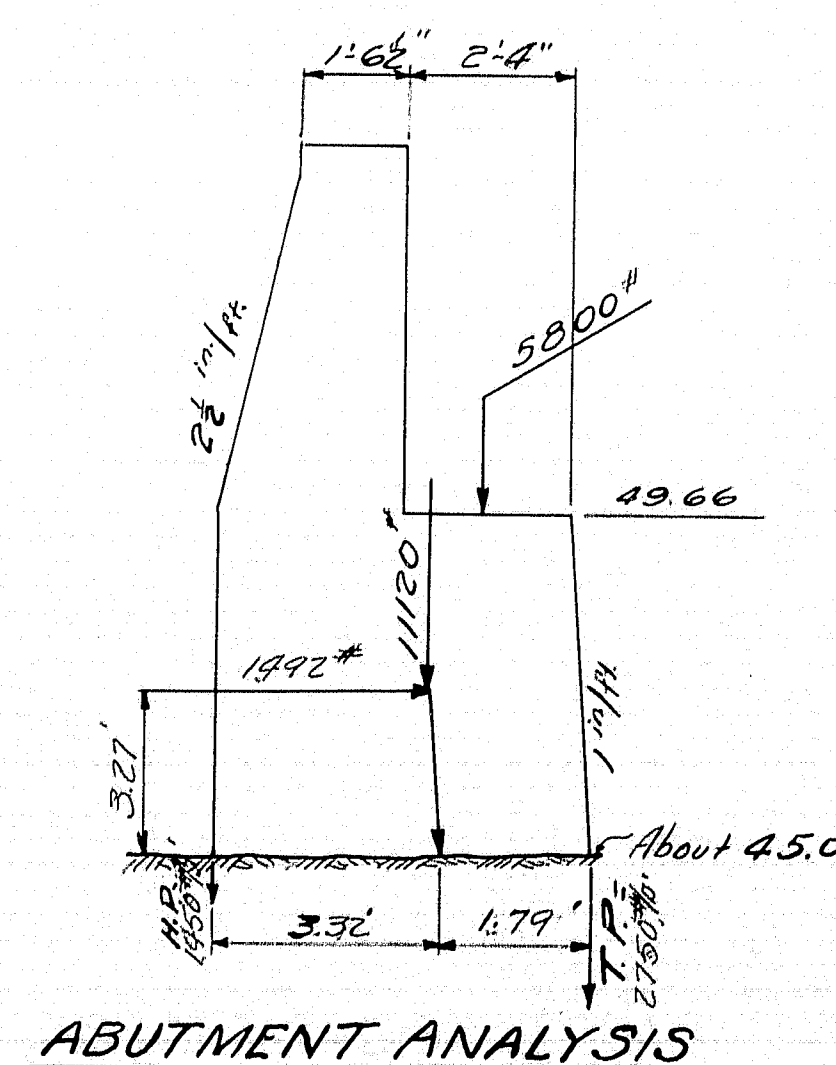
[illegible]

Sketch of a structure with dimensions and elevations:

- Top width: $1'6\frac{1}{2}"$ $2'4\frac{1}{2}"$
- Top left corner: $5\frac{1}{2}"$ $21'27\frac{1}{2}"$
- Top left corner note: "in direction" with an arrow pointing left.
- Left side elevation: $El. 48.69$
- Right side elevation: $El. 49.15$
- Right side note: "Better $1'$ " with an arrow pointing right.
- Bottom right note: "About $El. 43.0$ " with an arrow pointing to the base.

Sketch of a structure with dimensions and elevations:

- Top width: $1'6\frac{1}{2}"$ $2'4\frac{1}{2}"$
- Top left corner: $5\frac{1}{2}"$ $21'27\frac{1}{2}"$
- Top left corner note: "in direction" with an arrow pointing left.
- Left side elevation: $El. 42.69$
- Right side elevation: $El. 43.15$
- Right side note: "Better $1'$ " with an arrow pointing right.
- Bottom right note: "About $El. 43.0$ " with an arrow pointing to the bottom right corner.



All elevations are 1200.0 plus elev. indicated on details.

Hand-drawn cross-section diagram of a backwall structure. The diagram shows a stepped profile with various elevations and dimensions. Key elevations include El. 56.63, El. 55.0, El. 54.97, El. 54.46, El. 53.95, El. 53.44, El. 52.93, El. 52.57, El. 52.37, El. 52.27, El. 50.43, El. 50.70, El. 50.17, El. 49.66, El. 49.15, and El. 48.66. Dimensions include 6'-2 3/4", 5'-0 3/4", 6'-0", 6'-0", and 5'-0". A note states: "All backwall elevations are at face of backwall."

Bridge 31/35
Town 04-33

Maine Highway Commission
Bridge Division

DEAD RIVER BRIDGE
over

NORTH BRANCH DEAD RIVER
in

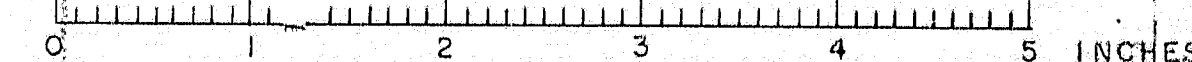
CHAIN OF PONDS (T2R6)
FRANKLIN COUNTY

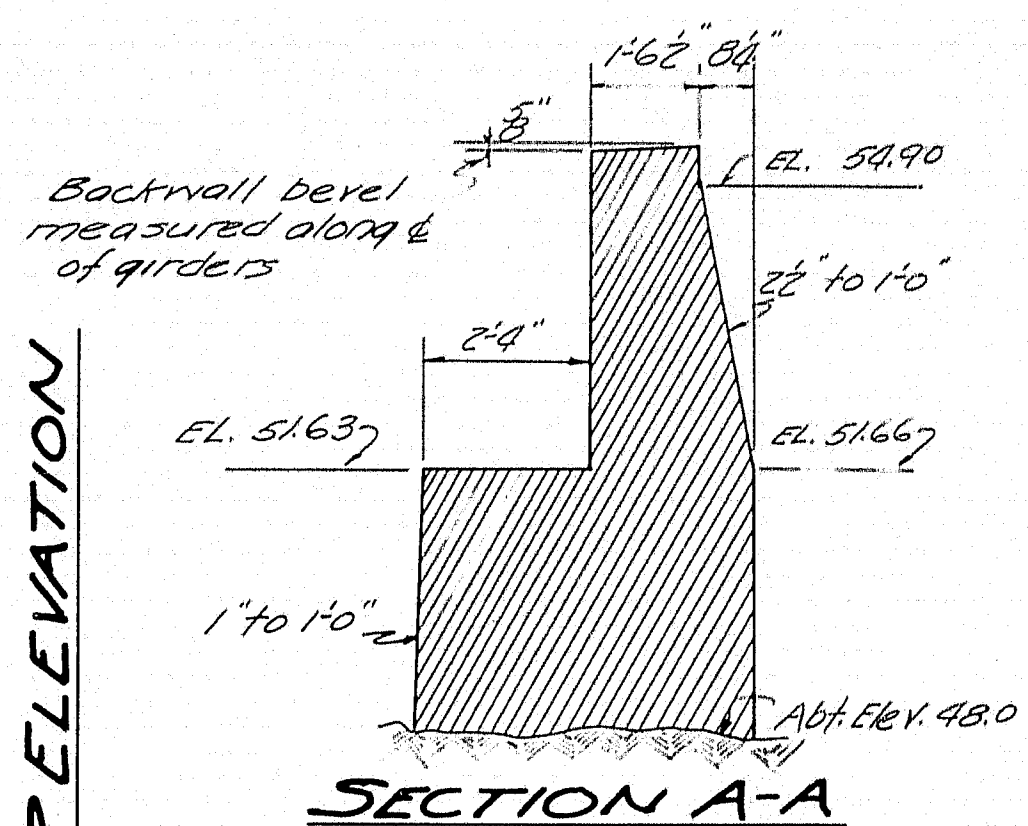
ABUTMENT N#1

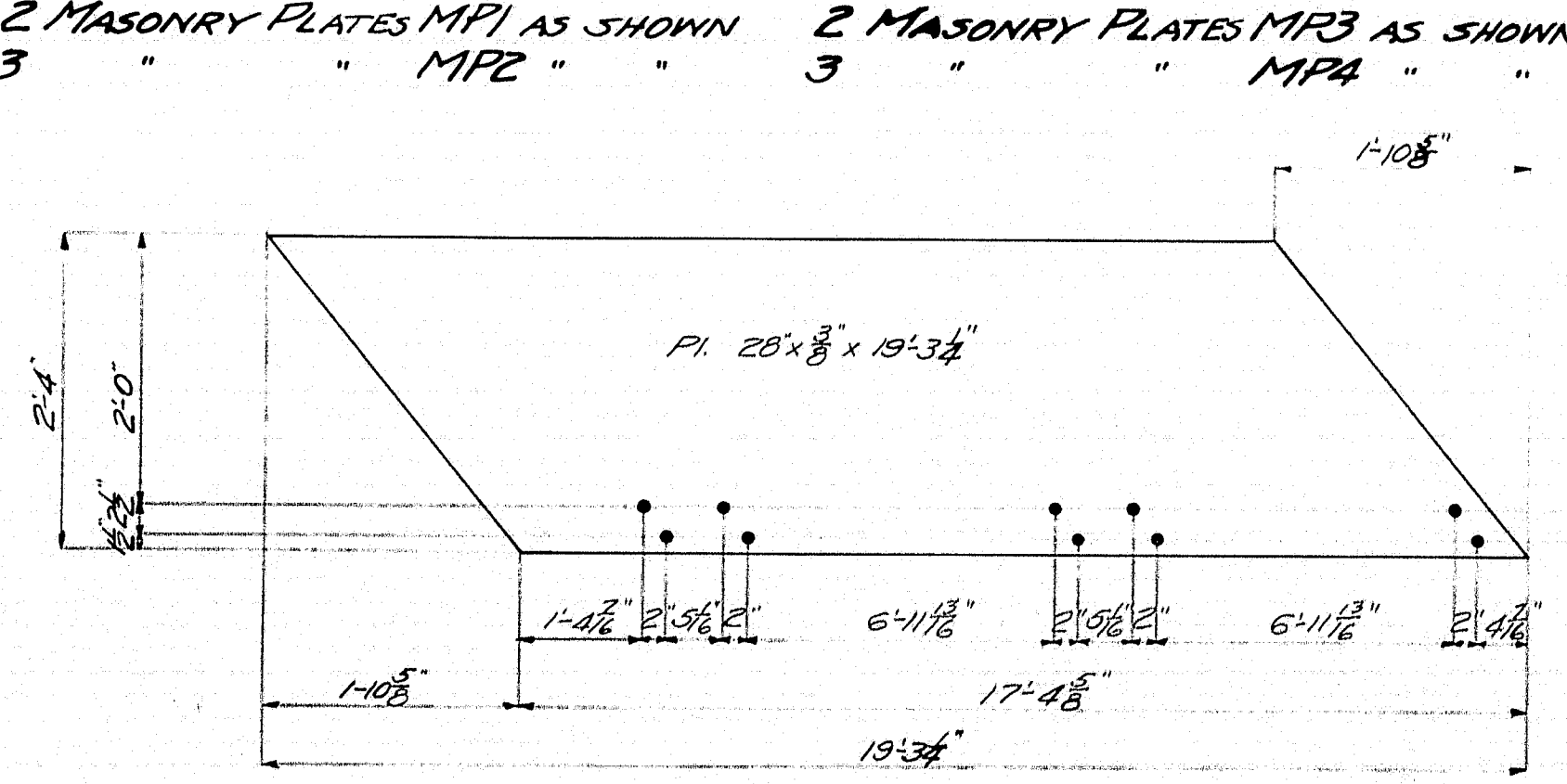
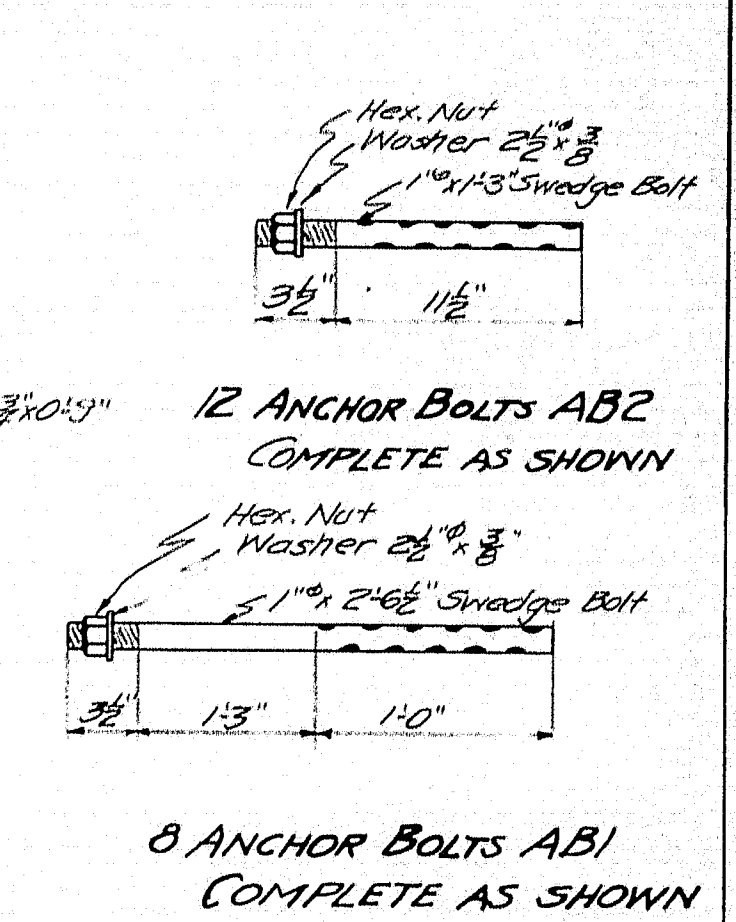
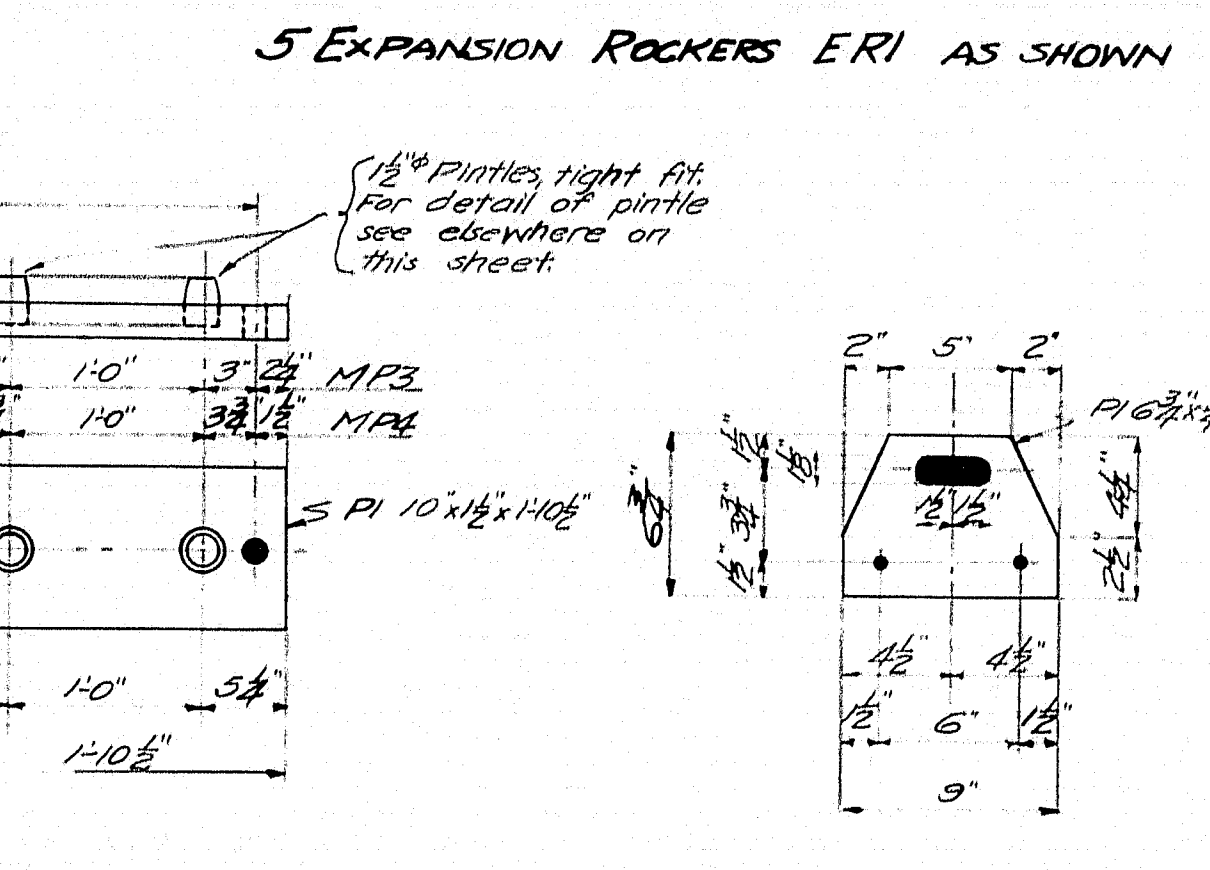
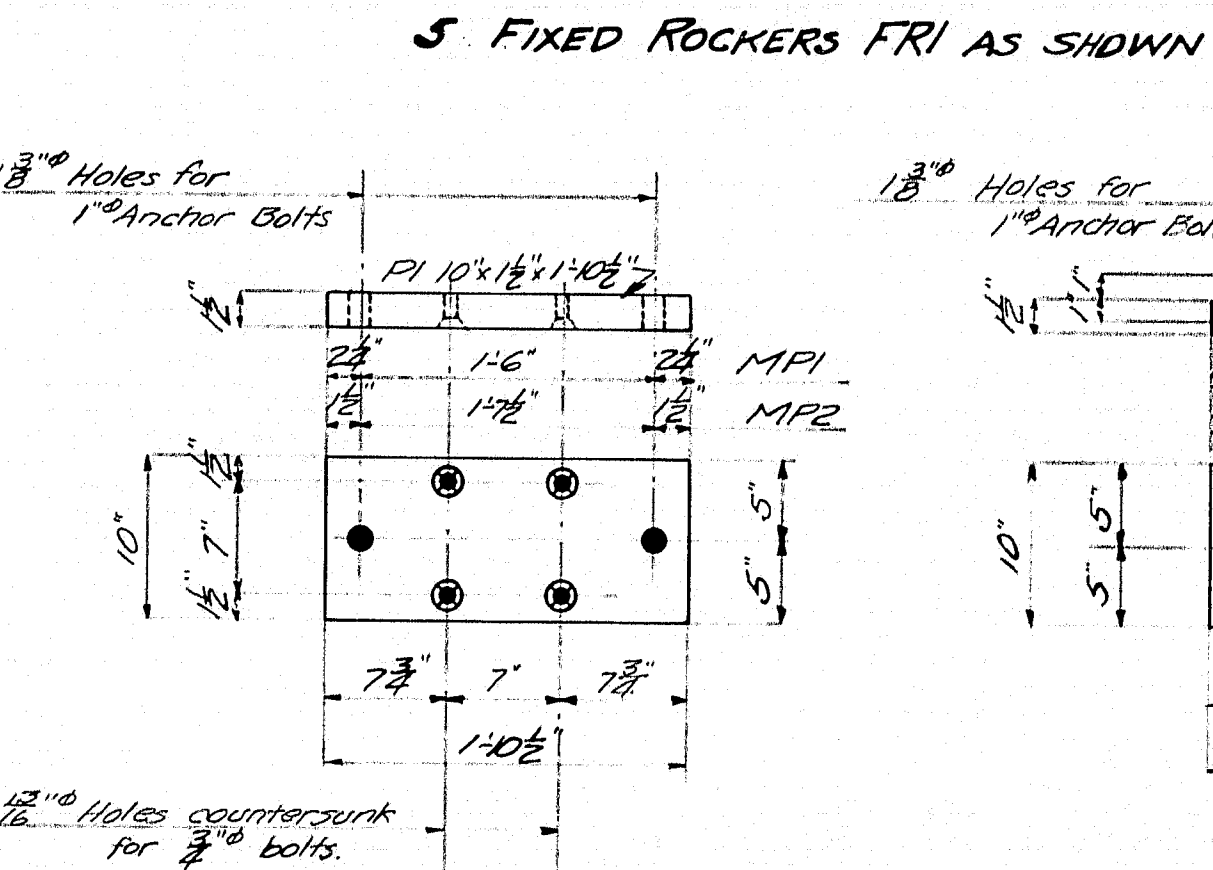
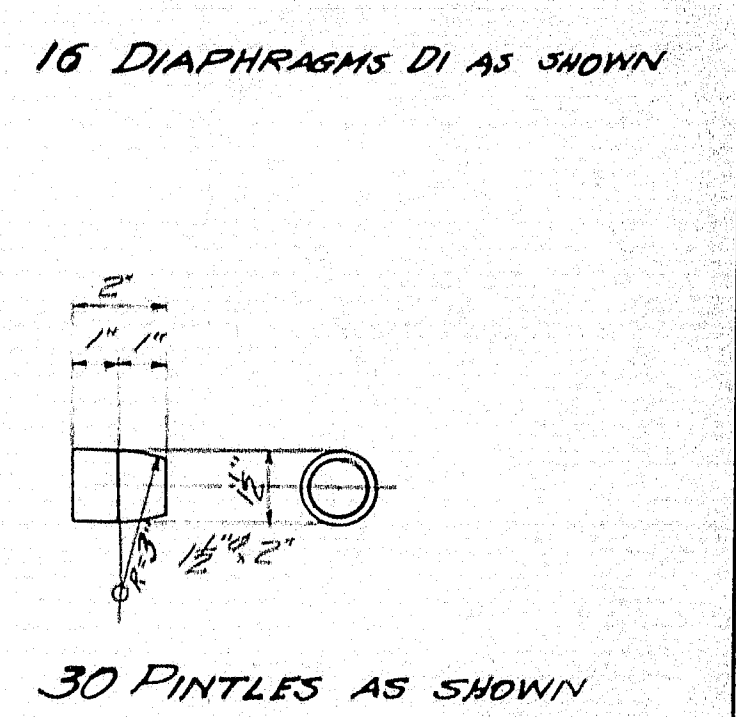
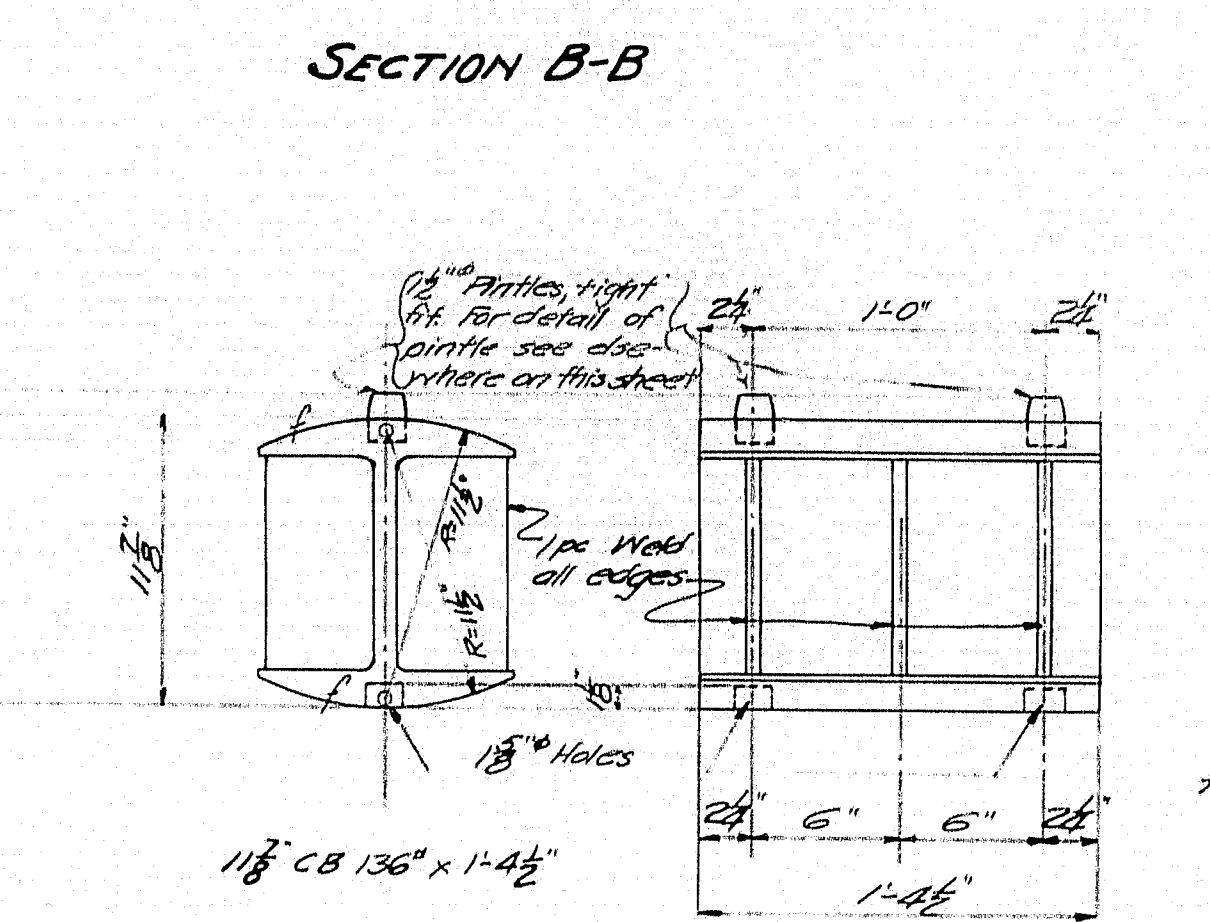
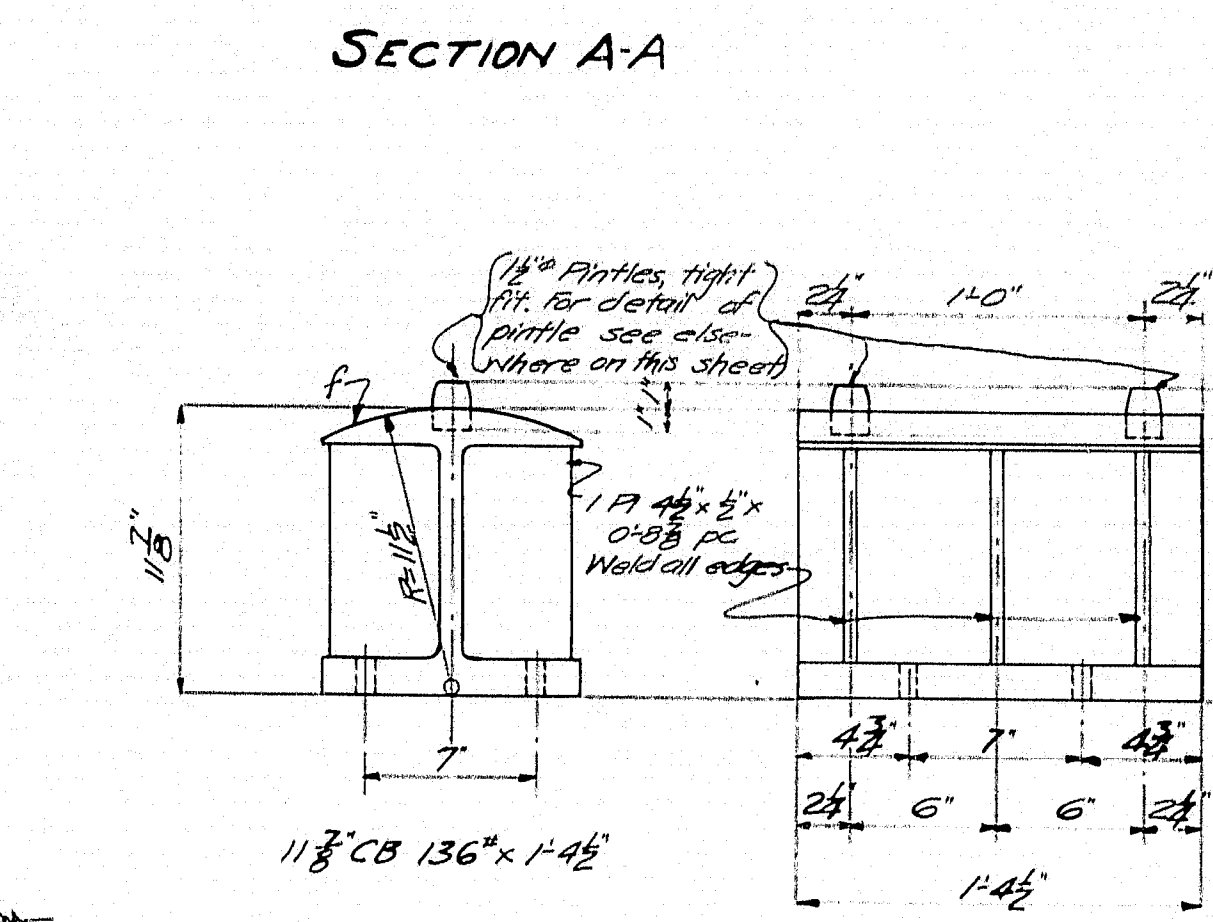
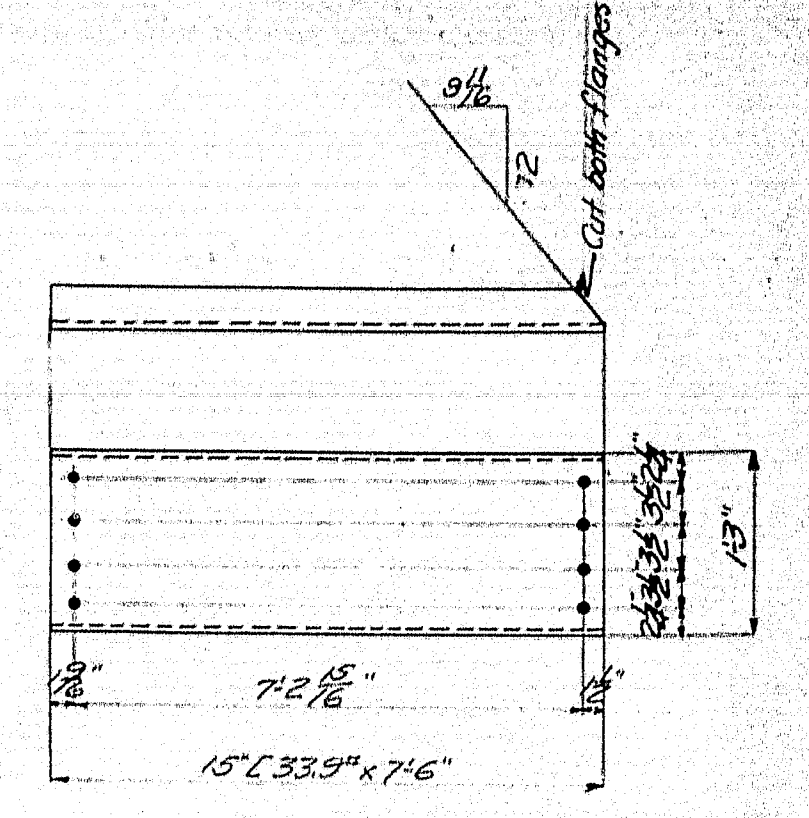
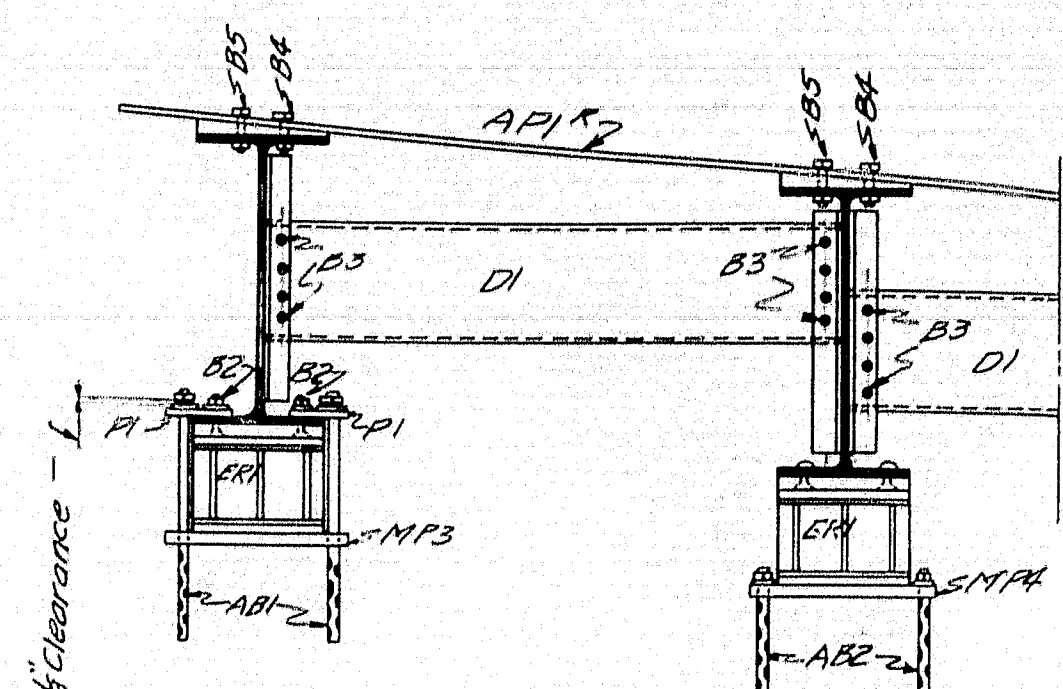
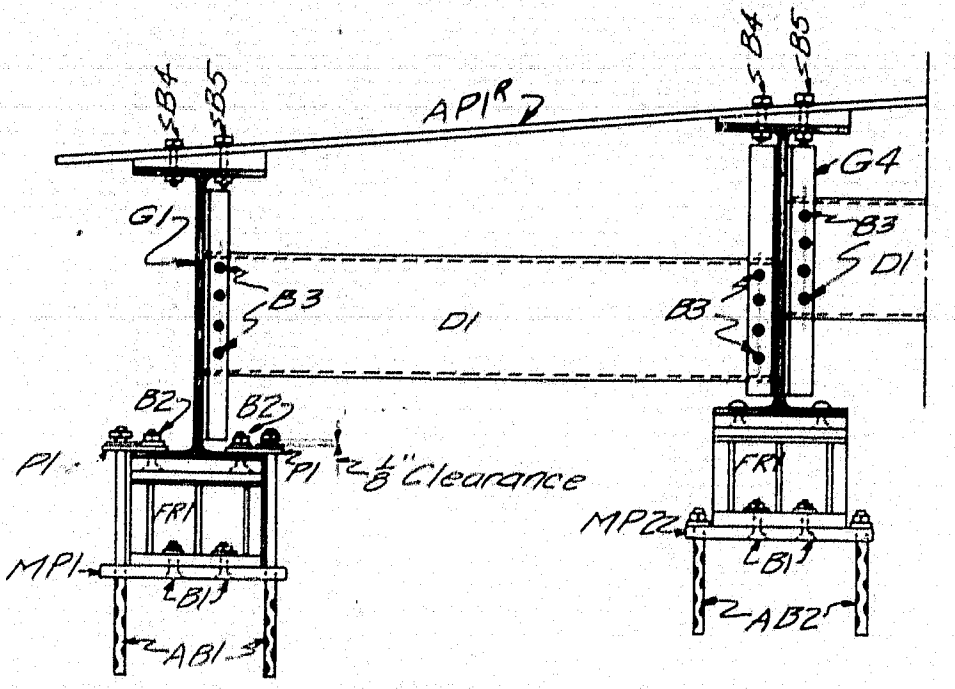
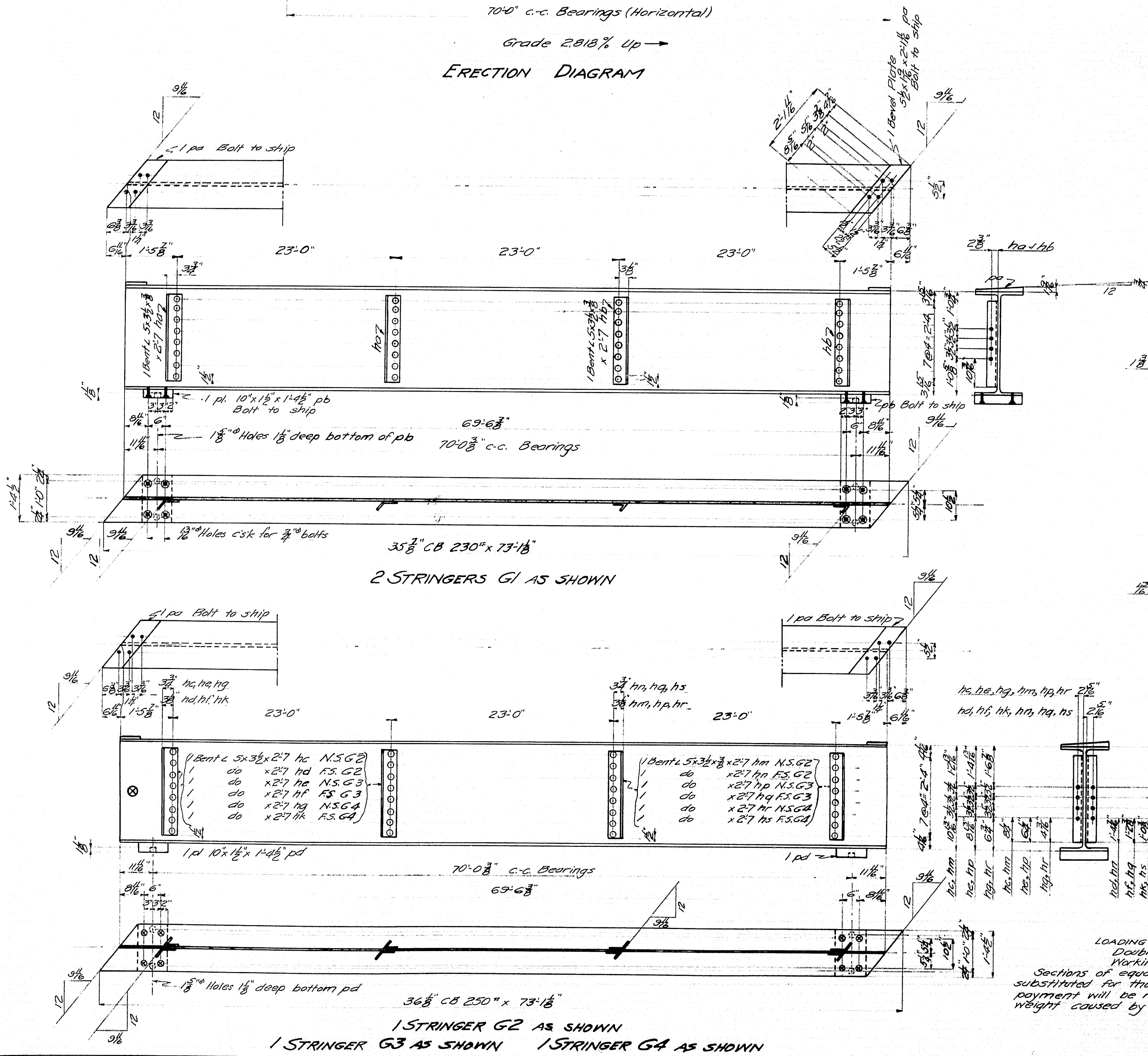
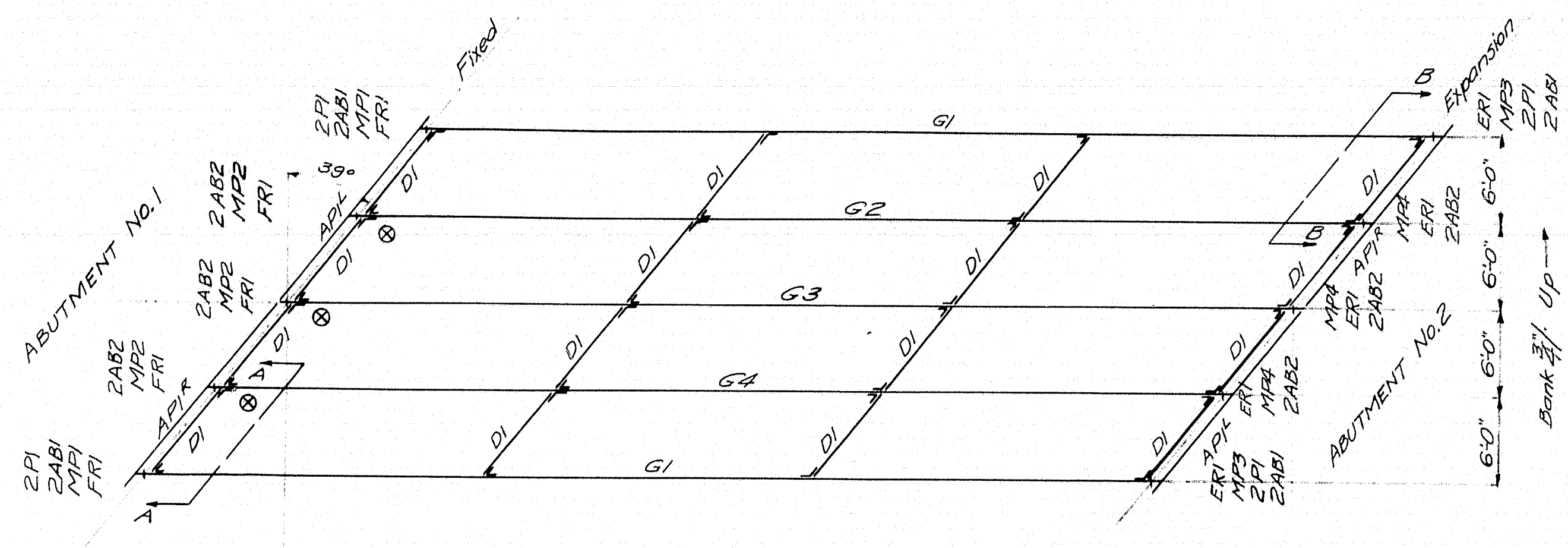
Sheet 2 of 5 Augusta, Me. August 1934

22-172

Placed by CIA.
38 May 1978







BOLT SCHEDULE

| MARK | SIZE | LENGTH | HEAD | NUT | NO. |
|------|------|--------|--------|-----|-----|
| B1* | 3/8" | 4" | CSK | HEX | 20 |
| B2* | 3/8" | 4" | " | " | 16 |
| B3 | 1/2" | 12" | Square | " | 130 |
| B4 | 3/8" | 3 1/2" | " | " | 20 |
| B5 | 3/8" | 3 1/2" | " | " | 20 |

* Each bolt to have 2 1/2" x 1/2" washer.

Bridge 3135
TOWN 04.33

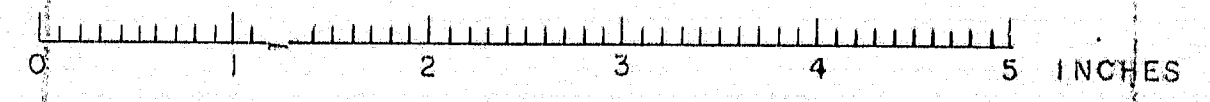
Maine Highway Commission
Bridge Division

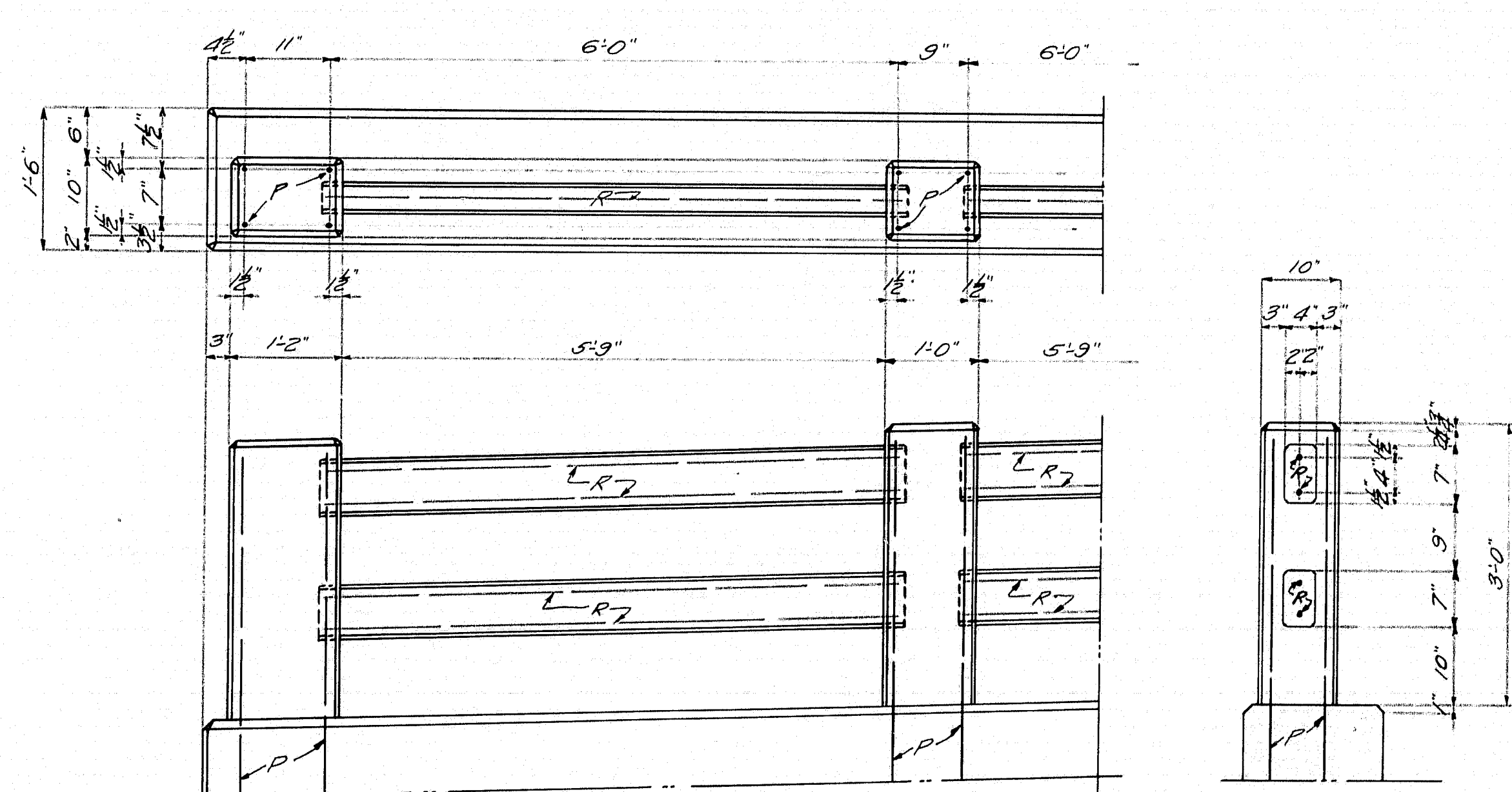
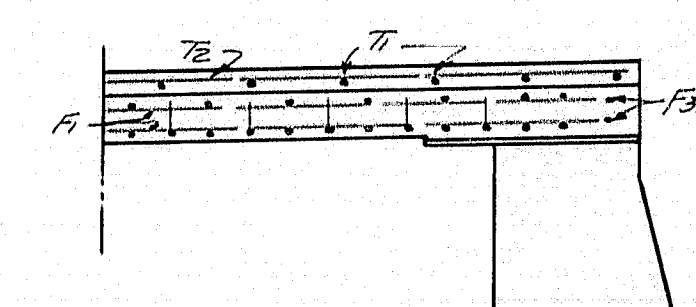
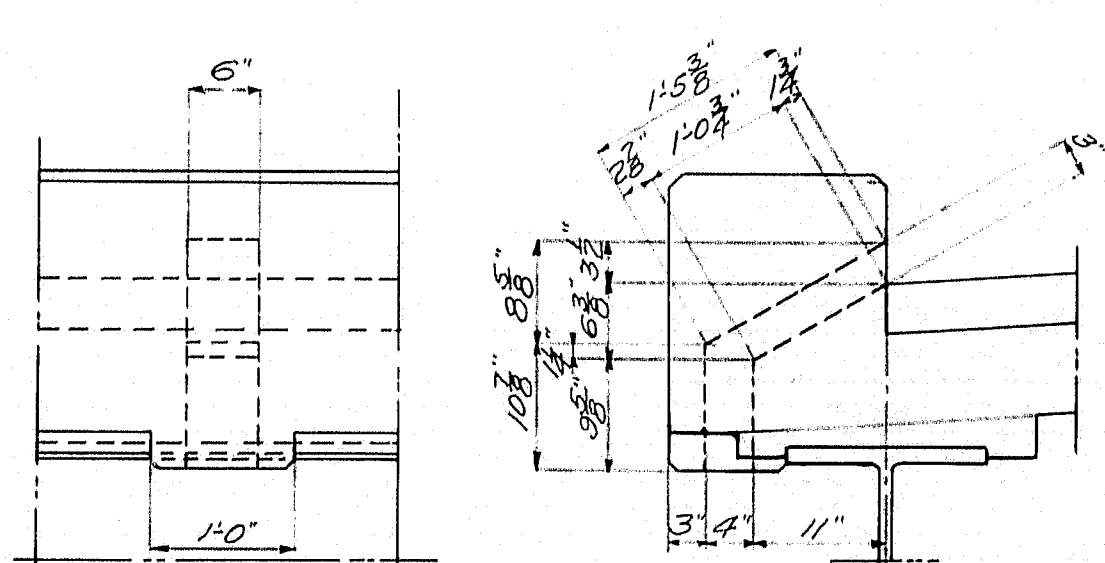
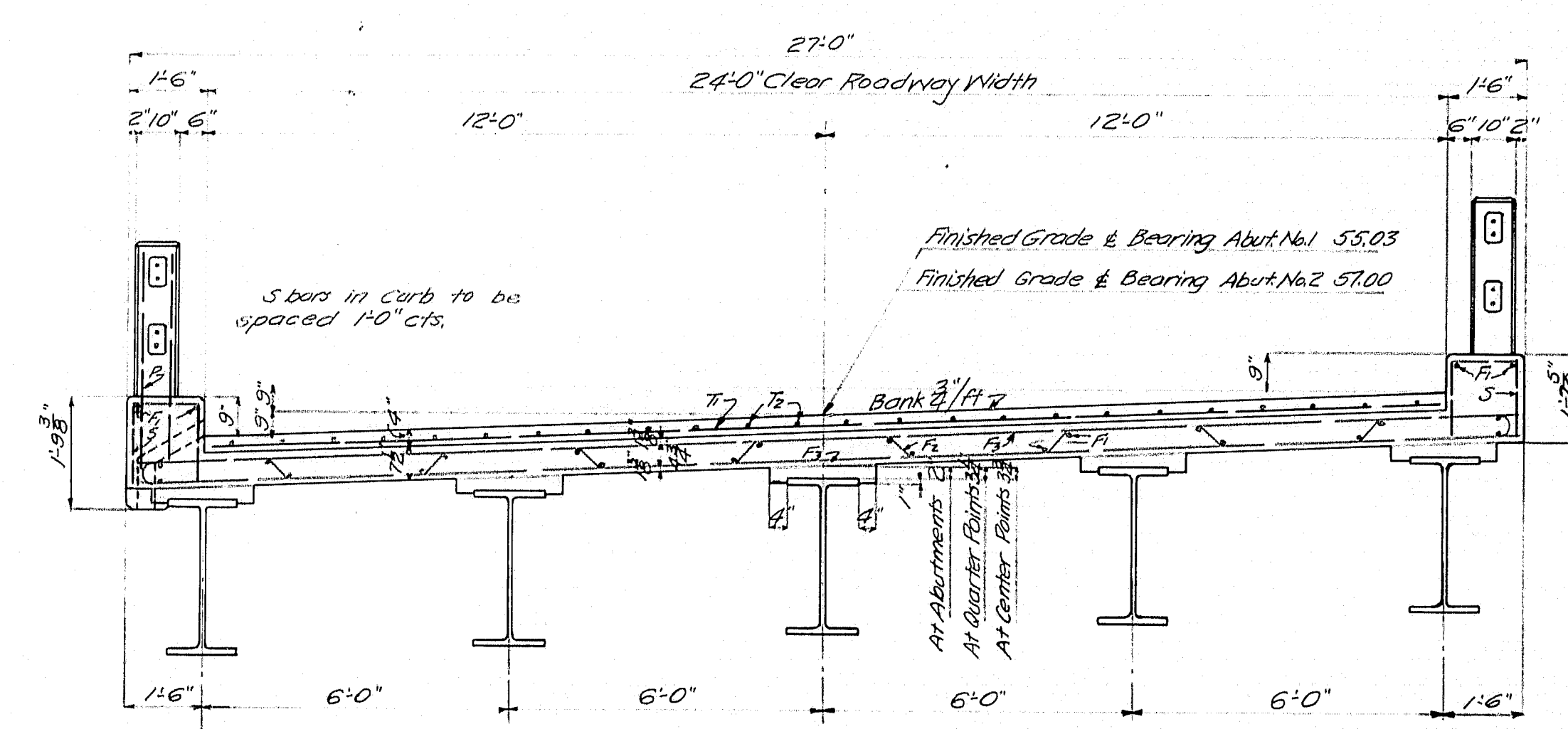
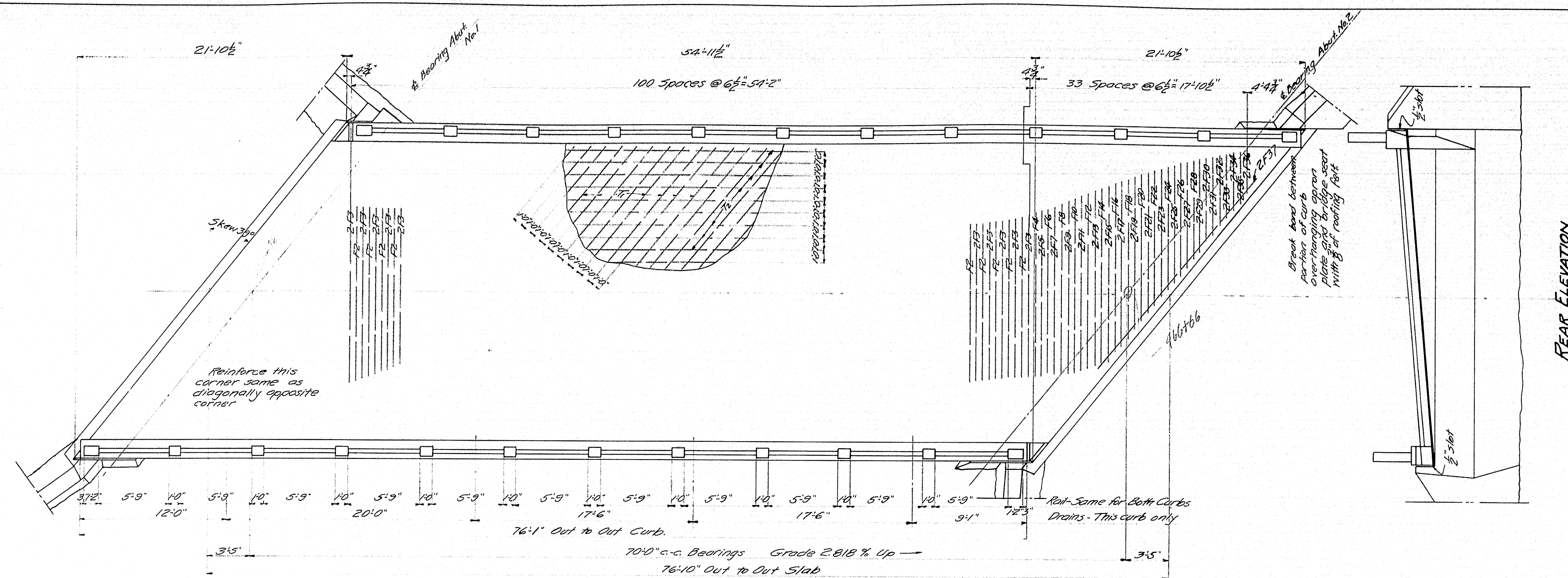
DEAD RIVER BRIDGE
over
NORTH BRANCH DEAD RIVER
in
CHAIN OF PONDS (T2 R6)
FRANKLIN COUNTY
STRUCTURAL STEEL
Sheet 4 of 5 August, Me. August 1934

All rivets to be 3/4"
All open holes to be 1" unless otherwise indicated.
All field connections to be bolted.
Specifications - MAINE STATE HIGHWAY
COMMISSION FOR STEEL HIGHWAY BRIDGES.

LOADING - 4.15
Double Line and Impact Loads
Working Stress - 24,000 psi
Sections of equal strength may be
substituted for those shown but the
payment will be made for additional
weight caused by such substitutions.

Design by L.C.L.P.
Details by L.C.L.P.





together
Curb and slab to be cast as Steel for posts to
be set in curb. Precast rail bars in lengths of 6'2".
Place rail bars in position with ends projecting
in position 2'. Wrap ends of rails for 6'
with two thicknesses of light roofing felt and
when post forms are removed cut away all
exposed left Chamfer all exposed edges of
concrete 1/4" unless otherwise indicated.

Cover the $\frac{3}{4}$ " slots between wing walls and superstructure on the back side with two layers of roofing felt 10' wide. Coat surface of concrete and back side of each layer of felt as applied with hot tar or asphalt. The area to be covered with felt is to be recessed $\frac{3}{4}$ " by nailing thin strips to the forms before the concrete is placed.

[illegible]

All steel to be plain rounds structural grade.
All steel dimensions are to bar centers.

Bridge 3135
Town 04-33

Maine Highway Commission
Bridge Division

DEAD RIVER BRIDGE
over
NORTH BRANCH DEAD RIVER
in
CHAIN OF PONDS (T2R6)
FRANKLIN COUNTY
FLOOR PLAN

Sheet 5 of 5 Augusta, Me August 1934